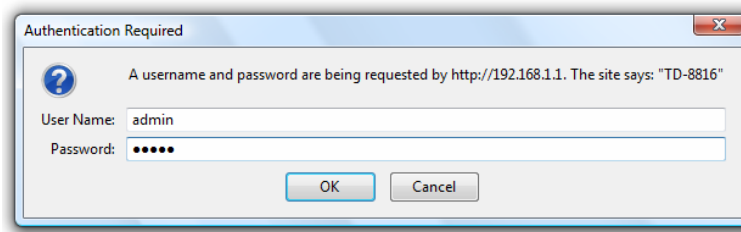


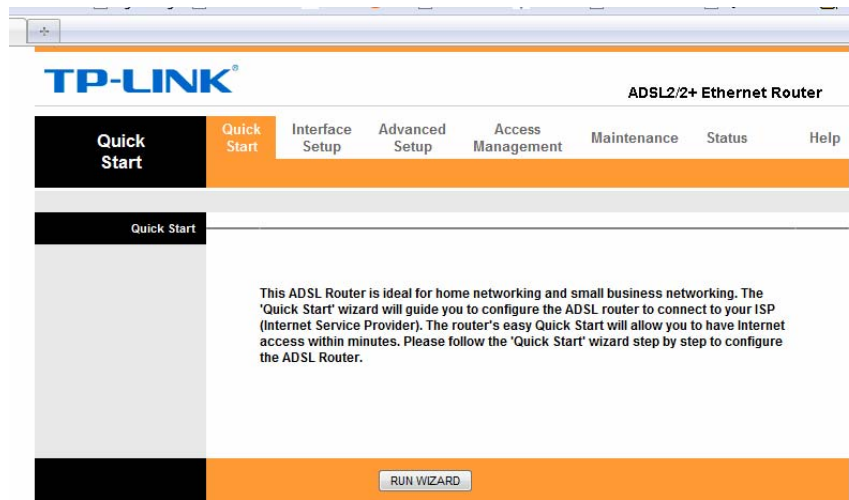
TP-LINK TD-8816 modem/router setup - Routed Mode

This will help you to configure your modem/router in routed mode for the Montreal-DSL internet connection.

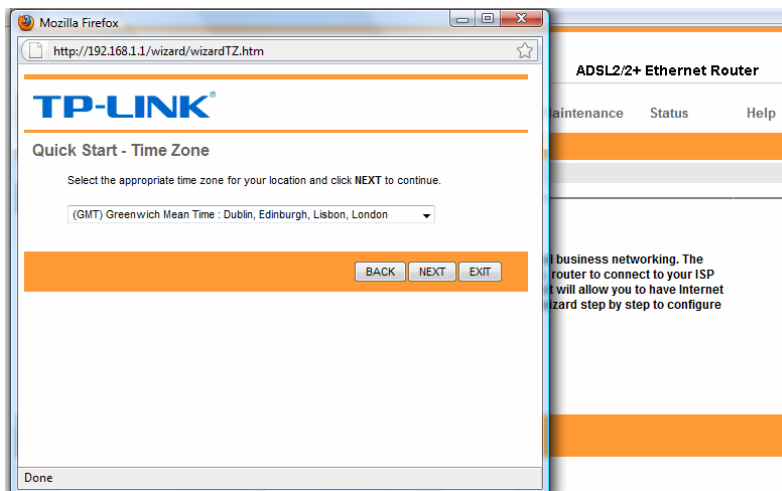
1. Open up your **Web Browser** and type in **192.168.1.1** in the address bar at the top and hit **Enter**. This will open up the TD-8816 home page. Username: admin, password: admin. Click **OK**



2. Please click **Quick start** and then **Run Wizard**:



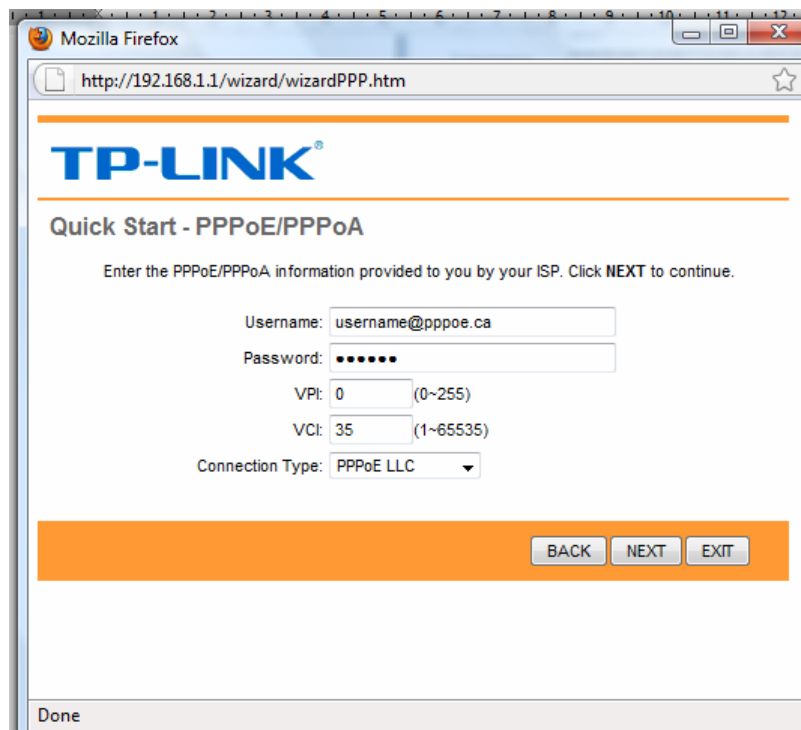
3. Click **Next** on the next screen to select the time zone. Select your time zone and click **Next**



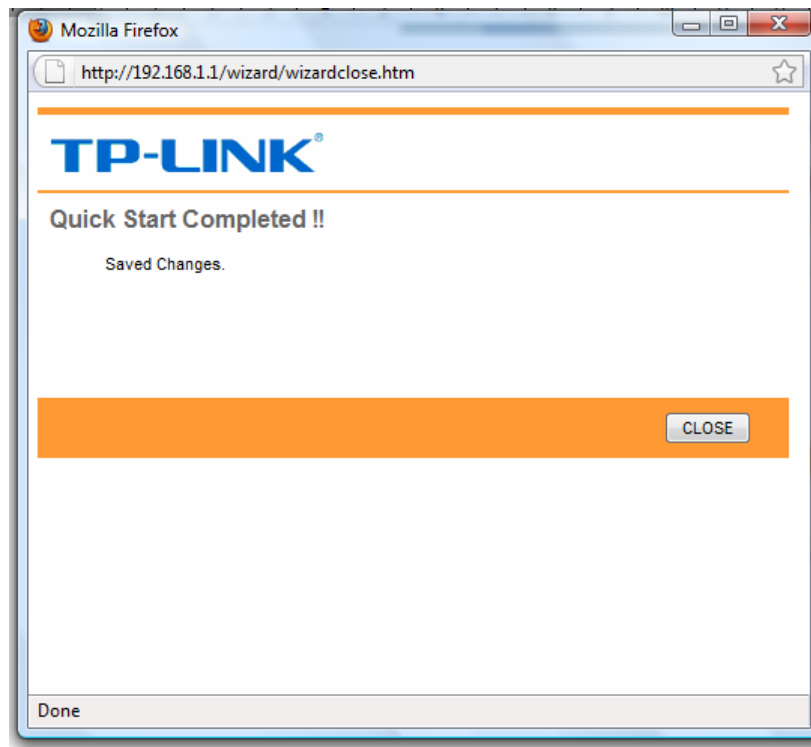
4. Select **PPPOE/PPPOA** and click Next



5. Input your username (yourusername@pppoe.ca) and your password.
Select the VPI/VCI settings **0/35** (for QC/ON) or **0/33** (for AB/BC) and then select it. Click Next.



6. Click on NEXT and Next again to save changes.



7. You are DONE! Click on CLOSE to finish

Enjoy high speed.

For more detailed information on configuring your modem/router please visit manufacturer website link:

<http://www.tp-link.com/products/productDetails.asp?pmode=TD-8816>